

Concerto pour Violon et Orchestre

apres la

3 eme SONATE pour Piano et Violon

(dans le caractere populaire roumain)

(La mineur)

Op. 25

I

Georges ENESCO

Valentin Doni

Violoncello

Moderato malinconico ♩ = 50

div.

1

10 *pp*

15 *f*

19 *pp*

27 *pp* *mf* *p* *pp*

35 *arco* *poco rit.* *f* *ff* *ff*

37 *f* *ff* *ff*

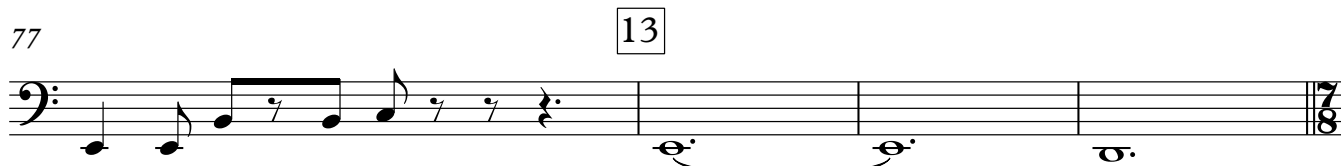
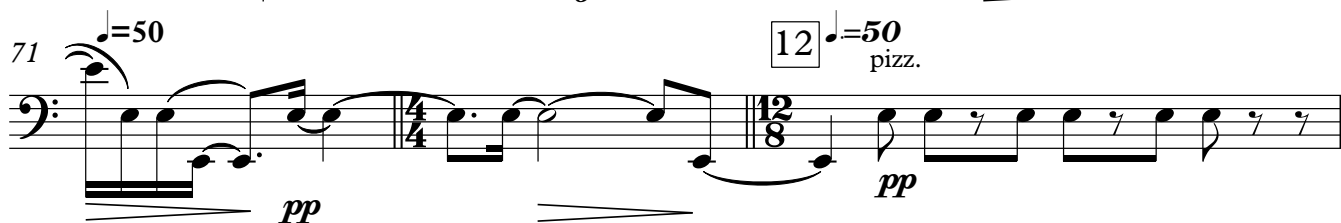
40 *f* *ff*

43 *espress.* *f* *ff*

44 *ppp*

48 **pochiss. rit.**
pizz. arco

8

a tempo ♩=50

Violoncello

3

81 $\text{♩} = \text{♩}$ pizz. arco div. mp

85 poco rit. 14 a tempo div. pizz. p

88 $\text{♩} = 50$ arco. pizz. $\text{♩} = \text{♩}$

90 $\text{♩} = 50$ arco. pizz. mp

92 15 $\text{♩} = 50$ arco mf

94 pizz. $\text{♩} = \text{♩}$ arco div. a 3 f mf

96 rit. molto tranq. f p pp

98 16 $\text{♩} = 50$

Violoncello

99

pochiss. animato

$\text{♩} = 58$

mp *mf*

3

101

ca - lan - do - poco a poco - poco allarg.

ff *mp*

6/4

103

p *mp*

6 6

17 *pizz.* $\text{♩} = 60$

pochiss. rit.- esitando, tranq.

105

arco $\text{♩} = 45$

3

poco rallentando -

108

a Tempo lento $\text{♩} = 40$

pp

18 **senza rigore - - - a Tempo I molto tranq.**

3

3/4

113

pizz. div.

pp

2

II

3

6

The bass line is written on a single staff in bass clef. It consists of three measures. The first measure is in 4/4 time and contains a whole note G2. The second measure is in 3/4 time and contains a whole note G2. The third measure is in 4/4 time and contains a whole note G2. The time signature changes from 4/4 to 3/4 after the first measure and back to 4/4 after the second measure.

11 **19**

6

3

20

4

The bass line of 'The Rose Tree' is written in a single staff with a bass clef. It consists of three measures, each with a different time signature: 3/4, 4/4, and 6/8. The notes are represented by horizontal lines, indicating the pitch and rhythm of the melody.

24

21

3

3

The bass line is written on a single staff in bass clef. It begins with a 3/8 time signature, followed by a whole rest. The time signature changes to 4/4, and the line contains a whole note. This is followed by another 2/4 time signature and a whole rest. The time signature changes back to 4/4, with another whole note. Finally, the time signature changes to 2/4, with a whole note. The piece ends with a double bar line.

32

22

4

23

24

♩=50

pizz. div.

6

6

2

The bass line of 'The Rose Tree' is written in 2/4 time. It begins with a whole rest for two measures, followed by a series of eighth notes: G2, A2, B2, C3, D3, E3, F3, G3, A3, B3, C4, D4, E4, F4, G4, A4, B4, C5, D5, E5, F5, G5, A5, B5, C6, D6, E6, F6, G6, A6, B6, C7, D7, E7, F7, G7, A7, B7, C8, D8, E8, F8, G8, A8, B8, C9, D9, E9, F9, G9, A9, B9, C10, D10, E10, F10, G10, A10, B10, C11, D11, E11, F11, G11, A11, B11, C12, D12, E12, F12, G12, A12, B12, C13, D13, E13, F13, G13, A13, B13, C14, D14, E14, F14, G14, A14, B14, C15, D15, E15, F15, G15, A15, B15, C16, D16, E16, F16, G16, A16, B16, C17, D17, E17, F17, G17, A17, B17, C18, D18, E18, F18, G18, A18, B18, C19, D19, E19, F19, G19, A19, B19, C20, D20, E20, F20, G20, A20, B20, C21, D21, E21, F21, G21, A21, B21, C22, D22, E22, F22, G22, A22, B22, C23, D23, E23, F23, G23, A23, B23, C24, D24, E24, F24, G24, A24, B24, C25, D25, E25, F25, G25, A25, B25, C26, D26, E26, F26, G26, A26, B26, C27, D27, E27, F27, G27, A27, B27, C28, D28, E28, F28, G28, A28, B28, C29, D29, E29, F29, G29, A29, B29, C30, D30, E30, F30, G30, A30, B30, C31, D31, E31, F31, G31, A31, B31, C32, D32, E32, F32, G32, A32, B32, C33, D33, E33, F33, G33, A33, B33, C34, D34, E34, F34, G34, A34, B34, C35, D35, E35, F35, G35, A35, B35, C36, D36, E36, F36, G36, A36, B36, C37, D37, E37, F37, G37, A37, B37, C38, D38, E38, F38, G38, A38, B38, C39, D39, E39, F39, G39, A39, B39, C40, D40, E40, F40, G40, A40, B40, C41, D41, E41, F41, G41, A41, B41, C42, D42, E42, F42, G42, A42, B42, C43, D43, E43, F43, G43, A43, B43, C44, D44, E44, F44, G44, A44, B44, C45, D45, E45, F45, G45, A45, B45, C46, D46, E46, F46, G46, A46, B46, C47, D47, E47, F47, G47, A47, B47, C48, D48, E48, F48, G48, A48, B48, C49, D49, E49, F49, G49, A49, B49, C50, D50, E50, F50, G50, A50, B50, C51, D51, E51, F51, G51, A51, B51, C52, D52, E52, F52, G52, A52, B52, C53, D53, E53, F53, G53, A53, B53, C54, D54, E54, F54, G54, A54, B54, C55, D55, E55, F55, G55, A55, B55, C56, D56, E56, F56, G56, A56, B56, C57, D57, E57, F57, G57, A57, B57, C58, D58, E58, F58, G58, A58, B58, C59, D59, E59, F59, G59, A59, B59, C60, D60, E60, F60, G60, A60, B60, C61, D61, E61, F61, G61, A61, B61, C62, D62, E62, F62, G62, A62, B62, C63, D63, E63, F63, G63, A63, B63, C64, D64, E64, F64, G64, A64, B64, C65, D65, E65, F65, G65, A65, B65, C66, D66, E66, F66, G66, A66, B66, C67, D67, E67, F67, G67, A67, B67, C68, D68, E68, F68, G68, A68, B68, C69, D69, E69, F69, G69, A69, B69, C70, D70, E70, F70, G70, A70, B70, C71, D71, E71, F71, G71, A71, B71, C72, D72, E72, F72, G72, A72, B72, C73, D73, E73, F73, G73, A73, B73, C74, D74, E74, F74, G74, A74, B74, C75, D75, E75, F75, G75, A75, B75, C76, D76, E76, F76, G76, A76, B76, C77, D77, E77, F77, G77, A77, B77, C78, D78, E78, F78, G78, A78, B78, C79, D79, E79, F79, G79, A79, B79, C80, D80, E80, F80, G80, A80, B80, C81, D81, E81, F81, G81, A81, B81, C82, D82, E82, F82, G82, A82, B82, C83, D83, E83, F83, G83, A83, B83, C84, D84, E84, F84, G84, A84, B84, C85, D85, E85, F85, G85, A85, B85, C86, D86, E86, F86, G86, A86, B86, C87, D87, E87, F87, G87, A87, B87, C88, D88, E88, F88, G88, A88, B88, C89, D89, E89, F89, G89, A89, B89, C90, D90, E90, F90, G90, A90, B90, C91, D91, E91, F91, G91, A91, B91, C92, D92, E92, F92, G92, A92, B92, C93, D93, E93, F93, G93, A93, B93, C94, D94, E94, F94, G94, A94, B94, C95, D95, E95, F95, G95, A95, B95, C96, D96, E96, F96, G96, A96, B96, C97, D97, E97, F97, G97, A97, B97, C98, D98, E98, F98, G98, A98, B98, C99, D99, E99, F99, G99, A99, B99, C100, D100, E100, F100, G100, A100, B100, C101, D101, E101, F101, G101, A101, B101, C102, D102, E102, F102, G102, A102, B102, C103, D103, E103, F103, G103, A103, B103, C104, D104, E104, F104, G104, A104, B104, C105, D105, E105, F105, G105, A105, B105, C106, D106, E106, F106, G106, A106, B106, C107, D107, E107, F107, G107, A107, B107, C108, D108, E108, F108, G108, A108, B108, C109, D109, E109, F109, G109, A109, B109, C110, D110, E110, F110, G110, A110, B110, C111, D111, E111, F111, G111, A111, B111, C112, D112, E112, F112, G112, A112, B112, C113, D113, E113, F113, G113, A113, B113, C114, D114, E114, F114, G114, A114, B114, C115, D115, E115, F115, G115, A115, B115, C116, D116, E116, F116, G116, A116, B116, C117, D117, E117, F117, G117, A117, B117, C118, D118, E118, F118, G118, A118, B118, C119, D119, E119, F119, G119, A119, B119, C120, D120, E120, F120, G120, A120, B120, C121, D121, E121, F121, G121, A121, B121, C122, D122, E122, F122, G122, A122, B122, C123, D123, E123, F123, G123, A123, B123, C124, D124, E124, F124, G124, A124, B124, C125, D125, E125, F125, G125, A125, B125, C126, D126, E126, F126, G126, A126, B126, C127, D127, E127, F127, G127, A127, B127, C128, D128, E128, F128, G128, A128, B128, C129, D129, E129, F129, G129, A129, B129, C130, D130, E130, F130, G130, A130, B130, C131, D131, E131, F131, G131, A131, B131, C132, D132, E132, F132, G132, A132, B132, C133, D133, E133, F133, G133, A133, B133, C134, D134, E134, F134, G134, A134, B134, C135, D135, E135, F135, G135, A135, B135, C136, D136, E136, F136, G136, A136, B136, C137, D137, E137, F137, G137, A137, B137, C138, D138, E138, F138, G138, A138, B138

43

44

45

6

6

2

The bass line is written on a single staff in bass clef. It begins with a key signature of one sharp (F#). The melody consists of eighth and sixteenth notes. There are two measures with a '6' below them, indicating a sixteenth-note triplet. The piece ends with a double bar line and a '2' above it, indicating a second ending.

Violoncello

2 49 **25** $\text{♩}=40$ **26** $\text{♩}=56$ *cresc. poco a poco* Pizz. arco

mf f mf sf 3

53 *poco piu sost.* $\text{♩}=52$ 3 3 3

55 *poco allarg. -----al*

56 *cresc. molto* *sost.----- a tempo* $\text{♩}=46$ *ff*

57 **27** *sff > p* Pizz. arco *ff* 3 5

60 *strascinandosi ben sost.* *strascinandosi* 6 6 6 6

63 **28** *f ff* 5

67 *pizz.* *arco* *ff* 5 5 3

69 *pesante largamente* $\text{♩}=40$ *piu sost.* **29** *a tempo* $\text{♩}=40$ 6 7 7

ff

71 *piu sost., senza rigore* 7

80 **30** 5 **31** 8

Allegro con brio, ma non troppo mosso ♩ = 110

13 32 16 arco div. p

31 pizz. 33 arco pizz. f p

38 arco p f

46 pizz. 5 34 p f

58 35 ♩ = 120 f p

67 pizz. arco ppp

76 36 10 mf p

93 37 2 arco pizz. mp

100 arco 2

106 38 7

Violoncello

2

113

118 **39** pizz.

125 arco

133 poco meno **40** Meno mosso ♩=70
4

143 A tempo ♩=110 Meno mosso ♩=70
3

149 A tempo ♩=110 Meno mosso ♩=70
3

155 A tempo ♩=110 Meno mosso ♩=70
3

160 A tempo ♩=110 **41** Meno mosso ♩=70
6 6

165 pizz. arco **6** **6** pizz. **f**

171 arco **f** **pp** < **f** **f** **pp** < **f** **f** < **f** **f** **f** **pp** < **sf** **f** **pp** < **sf** **f**

178 **42** A tempo ♩=110 div. *molto*

183

187 *mf*

192 *f* **43** *Meno mosso, rubato* ♩=80

196 *ff* *f* *ff*

201

206 *Tempo primo* ♩=110 *Meno mosso* ♩=80

210

213 **44** *Tempo primo* ♩=110 *p*

220 *mf*

Violoncello

4

225 pizz. arco div.

p

231

236 45 pizz.

242 div.

249 pizz. arco div. pizz. arco

p

256 div. pizz.

264 46 arco

p

273 47 **Meno mosso** ♩=85 ♩=80 pizz.

f *p*

284 48 arco e - si - tan - do 49

esitando, poco accel. al Tempo I

298 50 animato ♩=110 poco a poco acceler.

mp

302

309 **51** *con fuoco* $\text{♩} = 120$

319 $\text{♩} = 125$

326

332 **52** *Meno mosso* $\text{♩} = 70$ *poco acceler.*

337 *poco allarg. a tempo* $\text{♩} = 70$

344 *pizz.* *piu animato* $\text{♩} = 80$ **53** $\text{♩} = 100$ $\text{♩} = 110$ *arco*

353 *div.*

363 **54** $\text{♩} = 120$

373 *sub.meno mosso* $\text{♩} = 75$ *poco a poco allarg.*

Violoncello

6

molto meno mosso**largamente** ♩=50

378 **55**

ff

In 4 ♩=45 **In 2**

380 ♩=50

ff

387 **56** div.

ff *fff*

395 **57**

ffp

399 **In 4** ♩=40

fff

403 **molto. allarg.**

molto *sff*